



GAT MONTHLY MEMBERSHIP PROGRESS REPORT

Results as of: 5/31/2023

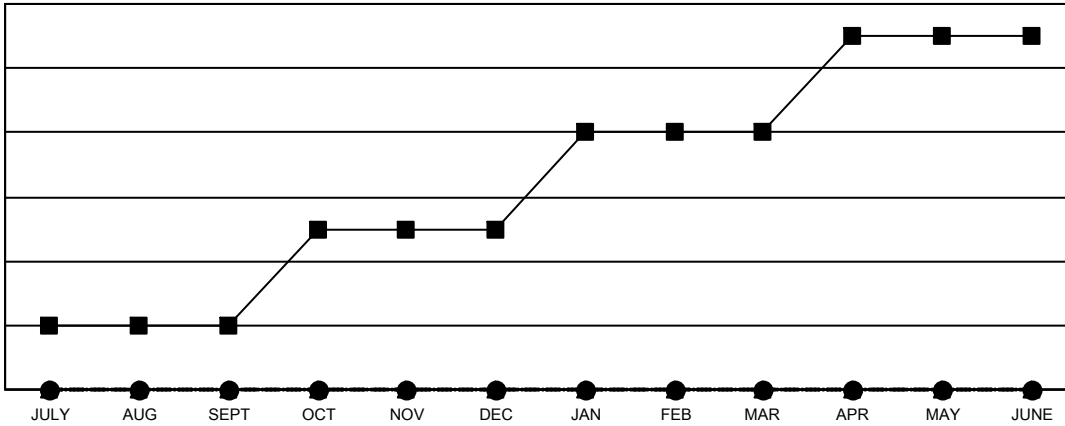
Multiple District 31

LOCATION: NORTH CAROLINA

| Clubs | | | |
|-----------------------|---------------|-----------|---------------|
| RESULTS FOR 2022-2023 | | | |
| QUARTER | NEW CLUB GOAL | NEW CLUBS | DROPPED CLUBS |
| JULY/AUG/SEPT | 2 | 0 | 2 |
| OCT/NOV/DEC | 3 | 0 | 4 |
| JAN/FEB/MAR | 3 | 0 | 1 |
| APR/MAY/JUNE | 3 | 0 | 1 |

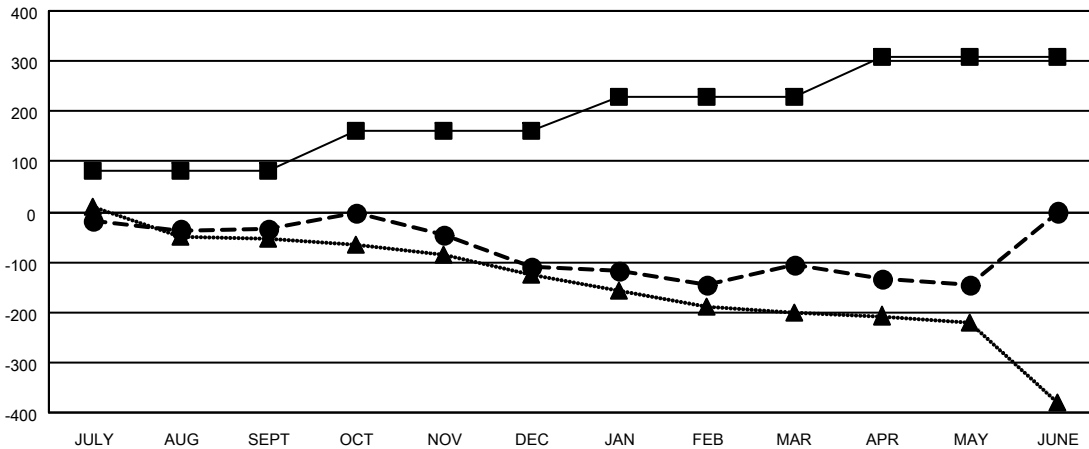
| Members | | | |
|-----------------------|------------------------|----------------------|--|
| RESULTS FOR 2022-2023 | | | |
| QUARTER | MEMBER GROWTH NET GOAL | MEMBER GROWTH ACTUAL | DROPPED MEMBERS ACTUAL (including transfers) |
| JULY/AUG/SEPT | 82 | 102 | 127 |
| OCT/NOV/DEC | 80 | 112 | 181 |
| JAN/FEB/MAR | 67 | 169 | 158 |
| APR/MAY/JUNE | 80 | 75 | 106 |

GOALS AND ACTUAL NEW CLUBS CUMULATIVE



- CURRENT YEAR GOALS FOR NEW CLUBS
- CURRENT YEAR ACTUAL NEW CLUBS
- ▲- LAST YEAR ACTUAL NEW CLUBS

GOALS AND ACTUAL MEMBERS CUMULATIVE



- MEMBER GROWTH NET GOAL
- MEMBER GROWTH ACTUAL
- ▲- LAST YEAR MEMBERSHIP ACTUAL

| | | |
|-------------------------|---|--|
| DROPPED CLUBS: 8 | 128 CLUBS OF 249 ADDED 1 OR MORE NEW MEMBERS | GENDER DISTRIBUTION |
| DROPPED MEMBERS | CLICK HERE FOR CUMULATIVE MEMBERSHIP DATA | MALE 2,979 (65.44%) |
| DECEASED 93 | | FEMALE 1,573 (34.56%) |
| CLUB CANCELLED 70 | | NON BINARY 0 (0.00%) |
| OTHER 409 | | PREFER NOT TO ANSWER 0 (0.00%) |
| TOTAL 572 | | TOTAL FAMILY UNIT MEMBERS 1,052 |
| | | FAMILY MEMBERS PAYING HALF DUES 540 |